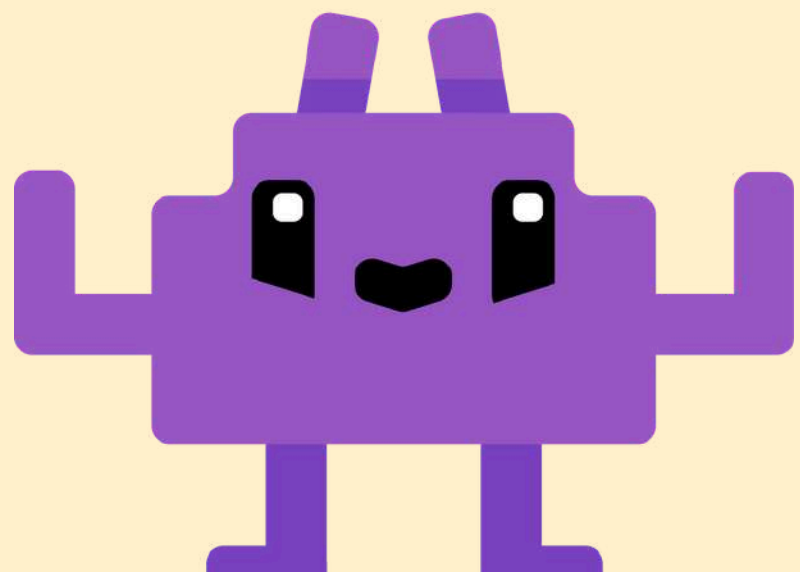


How Does **LM STUDIO**

**Enable Faster,
Private AI
Workflows?**





INTRODUCTION:

In a digital world where speed and privacy are critical, Studio offers a solution for running AI models directly on devices. This reduces reliance on cloud services, ensuring faster responses and stronger data protection. Users can efficiently test, experiment, and optimize AI workflows while keeping sensitive information secure. Its flexibility supports productivity in coding, content creation, and automation tasks, making it ideal for businesses and individuals seeking efficient, private, and customizable AI solutions. **LM Studio** streamlines AI processes while maintaining control over both performance and data security.

Speed Boost:

Running AI models locally eliminates cloud dependency, reducing latency, providing faster responses, smoother performance, and real-time testing.



Data Privacy:

On-device processing with **LM Studio** keeps sensitive data secure, protecting business files, personal information, and confidential projects effectively.



Workflow Flexibility

Local AI tools give full control, allowing customization, fine-tuning, and efficient workflow optimization for maximum productivity and innovation.

OVERVIEW

LM Studio empowers users with fast, private, and flexible AI workflows by processing data locally. Its focus on security and performance ensures that sensitive information remains protected while enabling real-time testing and customization. Businesses and individuals gain full control over AI tools, enhancing efficiency and innovation. By combining speed, privacy, and flexibility, LM Studio provides a reliable platform for developing secure, high-performance AI workflows that support long-term productivity and creative growth.



<https://aiagents.saastrac.com/ai-agent/lm-studio/>