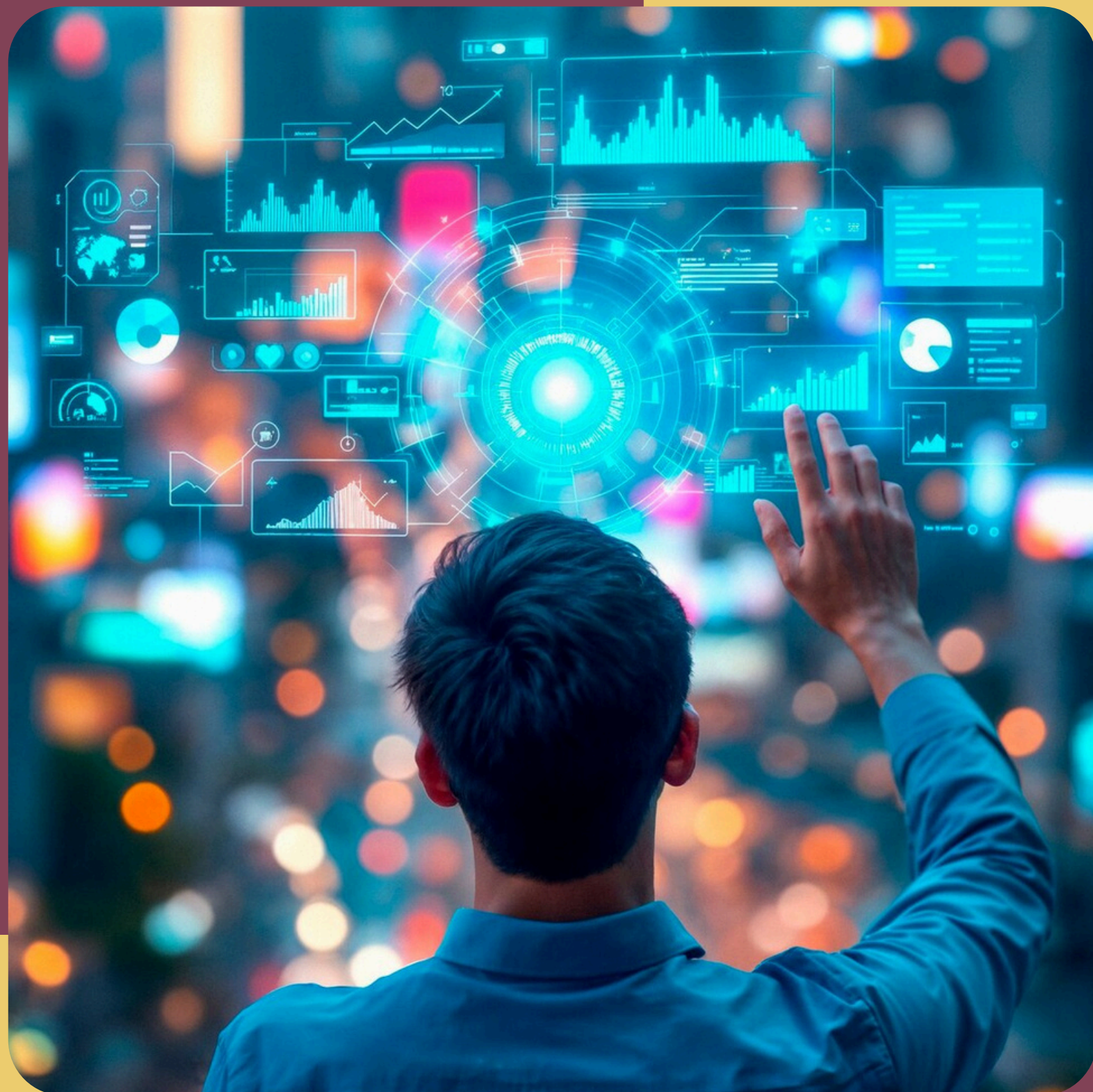


**DO YOUR DLP FEATURES REALLY  
WORK THE WAY YOU THINK?**





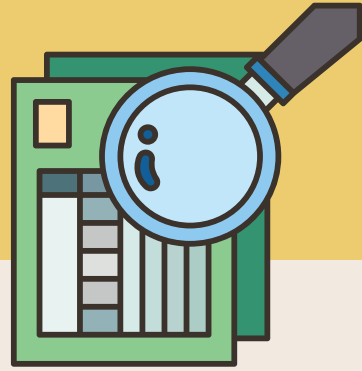


## ARE YOUR DLP FEATURES ENOUGH?

Yes, when properly configured and regularly updated, modern DLP features are designed to actively strengthen your security. They help organizations monitor sensitive data, prevent unauthorized access, and ensure compliance with ease. With the right setup, DLP features work together as a dependable, automated layer of protection that keeps your information safe and well-managed.

In today's rapidly evolving digital landscape, strong **DLP features** have become essential for organizations aiming to protect sensitive data and maintain long-term security.

# KEY DLP FEATURES THAT BOOST YOUR SECURITY



## Smart Data Detection

Advanced DLP tools quickly identify sensitive information across systems, helping you protect it before risks arise. They automatically classify data and reduce manual effort, ensuring that nothing important slips through unnoticed. This proactive detection keeps your security one step ahead.



## Real-Time Policy Enforcement

Clear rules and automated actions ensure that only authorized users can access or share important data. The moment something unusual happens, the system responds instantly to mitigate the risk. This keeps your data protected without slowing down everyday workflows.



## Cloud & Endpoint Visibility

Modern **DLP features** track data activity across cloud apps and devices, giving you complete visibility wherever information moves. You get a unified view of how data flows across your organization, reducing blind spots. This makes it easier to catch issues early and maintain consistent security.



# ARE DLP FEATURES REALLY KEEPING YOUR DATA SAFE?

When used thoughtfully, DLP features do much more than prevent data loss; they enhance visibility, support compliance, and give your organization stronger control over sensitive information. With consistent updates and smart configuration, they become a reliable part of your security strategy, keeping your data protected and your team confident.

Tools like **EmpMonitor** complement DLP features by monitoring device activity, tracking data usage, and providing actionable insights. This ensures sensitive information is handled securely while boosting overall data protection and team accountability.

<https://empmonitor.com/data-loss-prevention-software/>