

SHOP **ZOPICLONE**
DIRECT UK

PRESENTATION

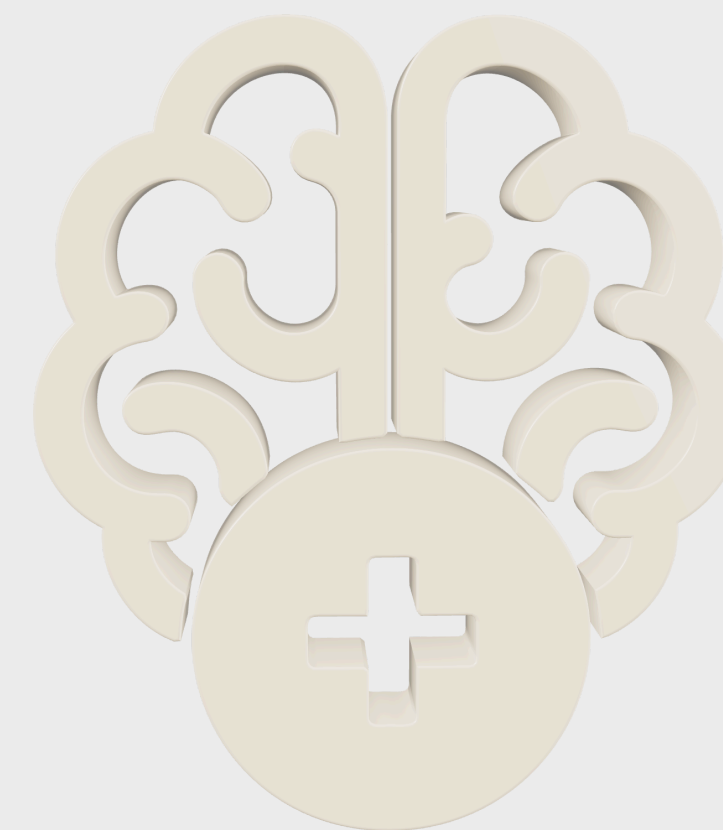
By safemedirectuk

INTRODUCTION

SafeMeds Direct UK is an online platform focused on providing convenient and discreet access to sleep support products in the UK. The website is designed to help individuals struggling with insomnia and sleep disturbances find reliable solutions through a simple and secure online ordering experience.

ABOUT THE WEBSITE

SafeMeds Direct UK positions itself as a trusted online destination for sleep aid tablets, offering a user-friendly shopping experience supported by secure payment systems and discreet delivery services.



MISSION & PURPOSE

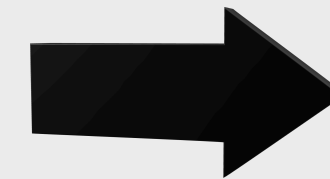
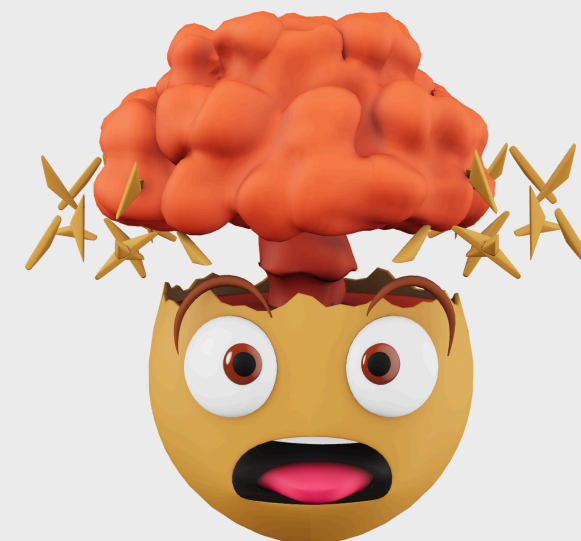


The main goal of SafeMeds Direct UK is to make sleep solutions more accessible to people dealing with:

Insomnia

Irregular sleep schedules


Stress-related sleep issues



The platform aims to deliver convenience, reliability, and discretion while helping customers improve sleep quality and overall well-being.

THE ROLE OF SLEEP IN MANAGING MENTAL EXHAUSTION

zopiclone 7.5 plays an important role in conversations about restoring sleep when mental exhaustion begins to affect emotional stability, focus, and overall wellbeing. Many health-conscious individuals today recognise that quality rest is not a luxury but a biological necessity for brain recovery and resilience. Mental exhaustion often develops slowly. Long work hours, digital overload, stress, and emotional pressure gradually drain cognitive energy. Over time, the brain struggles to recharge, and sleep becomes irregular or fragmented. Understanding the relationship between sleep and mental fatigue can empower people to make informed decisions about improving rest.



UNDERSTANDING MENTAL EXHAUSTION AND ITS LINK WITH SLEEP

Mental exhaustion is a state where the brain feels overwhelmed, foggy, and emotionally drained. It is not simply tiredness. It involves reduced concentration, irritability, lack of motivation, and slower decision-making.

Research from the World Health Organization highlights that poor sleep is closely associated with stress, anxiety, and reduced cognitive performance. When sleep is disrupted, the brain cannot perform essential nightly repair processes.

During healthy sleep, the brain:

- Clears metabolic waste
- Strengthens memory pathways
- Regulates mood hormones
- Restores mental energy

Without these processes, mental fatigue builds rapidly.



WHY QUALITY SLEEP IS ESSENTIAL FOR BRAIN RECOVERY

Sleep functions like overnight therapy for the mind. It is when emotional processing and memory organisation happen naturally.

The National Institute of [Mental Health](#) explains that sleep helps regulate neurotransmitters responsible for mood balance and emotional resilience. When rest is disrupted, emotional regulation becomes difficult.

Effects of poor sleep on mental exhaustion include:

- Reduced attention span
- Increased stress response
- Slower reaction times
- Emotional sensitivity
- Brain fog and memory lapses
-

This explains why improving sleep often improves mental clarity.





ZOPICLONE 7.5 IN SUPPORTING SHORT-TERM SLEEP RESTORATION

Short-term medical sleep support is sometimes considered when lifestyle adjustments alone are not enough. Healthcare professionals may discuss sleep aids to help restore a consistent sleep cycle.

When reading about medication, many individuals encounter resources such as [zopiclone 7.5 piL](#), which explains usage, safety, and guidance for informed decision-making. Educational leaflets emphasise responsible use and professional supervision.

Sleep aids are typically considered alongside lifestyle changes rather than as a permanent solution. Their goal is to help reset the sleep rhythm so the body can return to natural patterns.



THE SCIENCE BEHIND SLEEP CYCLES AND MENTAL ENERGY

Sleep is divided into stages that repeat throughout the night:

1. Light sleep
2. Deep sleep
3. REM sleep

Each stage has a role in mental recovery.

Deep sleep repairs the body, while REM sleep processes emotions and memories. According to Harvard Medical School, REM sleep is strongly linked with emotional regulation and learning.

If sleep is interrupted frequently, the brain misses these critical stages, leading to persistent fatigue.

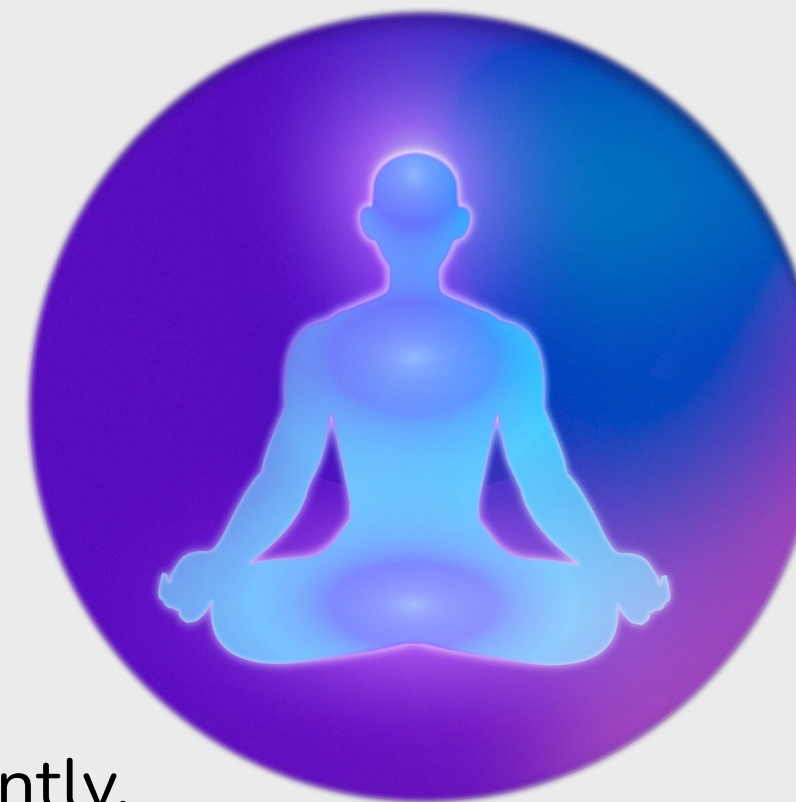


SIGNS YOUR MENTAL EXHAUSTION MAY BE SLEEP-RELATED

Many people do not realise their exhaustion is sleep-driven. Warning signs include:

- Feeling tired after a full night in bed
- Difficulty concentrating at work
- Frequent irritability
- Loss of motivation
- Trouble remembering details
-

Improving sleep often reduces these symptoms significantly.



ZOPICLONE 7.5 AND BUILDING CONSISTENT SLEEP PATTERNS

Consistency is the most powerful factor in restoring sleep. Going to bed and waking up at the same time trains the brain to follow a natural rhythm.

Some people researching sleep solutions encounter terms like [zopiclone buy](#) while exploring treatment discussions online. However, experts consistently emphasise that any sleep medication should only be used responsibly and under professional guidance.

Healthy sleep routines include:

- Reducing screen exposure before bed
- Creating a calm sleep environment
- Avoiding caffeine late in the day
- Practising relaxation techniques

These steps complement medical advice when sleep problems persist.



THE EMOTIONAL BENEFITS OF RESTORATIVE SLEEP

When sleep improves, emotional resilience often follows.

Benefits include:

- Improved mood stability
- Reduced stress response
- Better decision-making
- Increased motivation
- Stronger emotional control
-

The NHS highlights that good sleep supports mental wellbeing and reduces emotional strain. This connection explains why sleep is often a first step in mental recovery plans.



HOW LIFESTYLE CHANGES ENHANCE SLEEP QUALITY

Lifestyle habits strongly influence sleep patterns.

Helpful habits include:

- Daily sunlight exposure
- Regular physical activity
- Mindfulness or meditation
- Limiting late-night meals
- Keeping the bedroom cool and quiet
-

These changes signal the brain that bedtime is approaching.



ZOPICLONE 7.5 AND SAFE SLEEP EDUCATION

Education plays a key role in safe sleep improvement. Understanding guidance around zopiclone 7.5 mg tablets helps individuals learn how medical sleep support fits within a broader wellness plan.

Sleep improvement is most effective when combining:

- Medical guidance
- Behavioural changes
- Stress management
- Consistent routines
-

This balanced approach promotes long-term results.



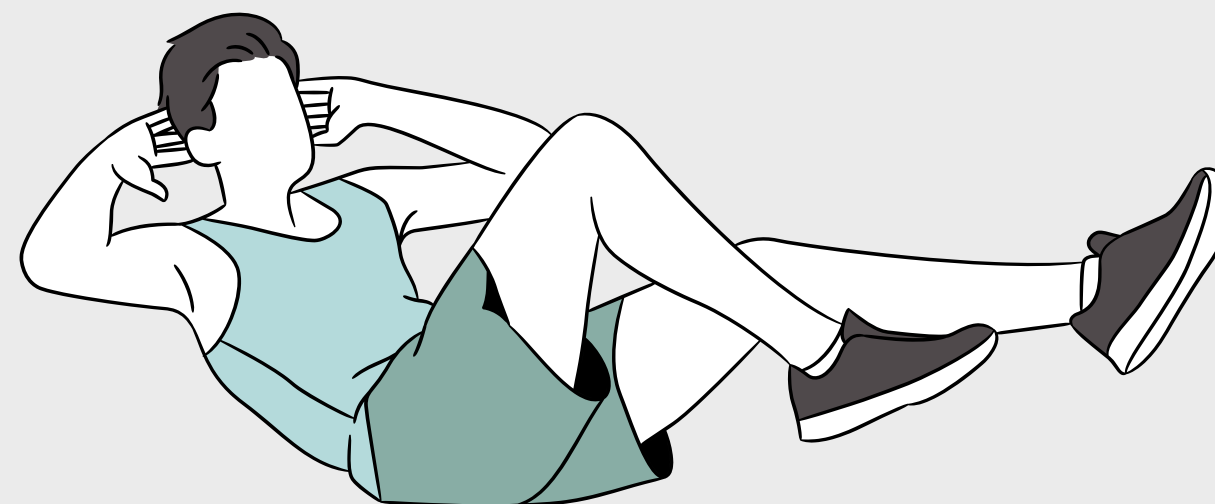
MANAGING STRESS TO REDUCE NIGHT-TIME OVERTHINKING

Stress is one of the biggest barriers to sleep. Racing thoughts can keep the brain in alert mode long after bedtime.

Stress-reducing strategies include:

- Journaling before sleep
- Breathing exercises
- Light stretching
- Limiting news exposure at night

These practices calm the nervous system and prepare the brain for rest.



THE ROLE OF PROFESSIONAL GUIDANCE IN SLEEP RECOVERY

Seeking professional advice is essential when sleep problems persist. Many readers researching sleep solutions encounter phrases such as [zopiclone uk buy](#), but professional consultation ensures safe and appropriate treatment decisions.

Healthcare providers evaluate:

- Sleep history
- Lifestyle habits
- Stress levels
- Medical conditions

This personalised approach improves outcomes.



LONG-TERM STRATEGIES FOR PREVENTING MENTAL EXHAUSTION

Sustainable sleep health involves long-term habits:

- Maintain a sleep schedule
- Take regular breaks from screens
- Prioritise mental health
- Stay physically active
- Practise relaxation techniques



Over time, these habits reduce the risk of recurring exhaustion.

FAQS

1. Why does lack of sleep cause mental exhaustion?

Sleep allows the brain to restore energy and regulate neurotransmitters; without it, cognitive performance declines.

2. How many hours of sleep do adults generally need?

Most adults require seven to nine hours of sleep for optimal brain function.

3. Can stress affect sleep quality?

Yes, stress activates the nervous system, making it harder to fall and stay asleep.

4. Why is REM sleep important?

REM sleep supports emotional processing and memory consolidation.


5. When should someone seek professional advice for sleep issues?

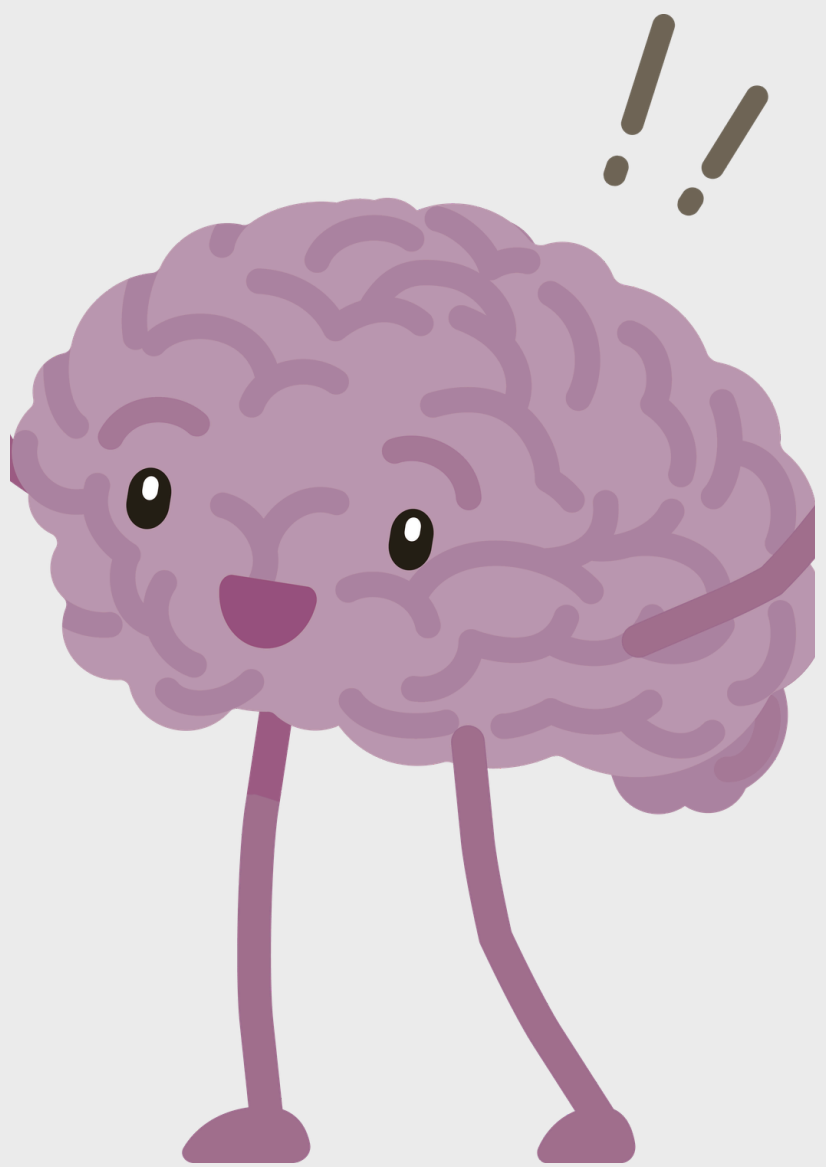
If sleep problems continue for several weeks, professional guidance is recommended.

CONCLUSION

zopiclone 7.5 has become part of the broader conversation around restoring sleep and overcoming mental exhaustion.

From my perspective as a wellness advocate, the biggest lesson is that sleep is the foundation of emotional strength, productivity, and mental clarity. When we prioritise rest, we protect our focus, mood, and long-term wellbeing. Small nightly habits can create powerful life-changing results.





THANK YOU