



# Why Is 4 Meaning In Love Associated With Trust And Commitment?



BUILD STRONG RELATIONSHIPS THROUGH LOYALTY, BALANCE, AND ENDURING COMMITMENT TODAY.

# The Symbolism of 4

In numerology, numbers are believed to hold symbolic meanings that influence emotions, personalities, and relationships. The **4 Meaning in Love** is widely associated with trust, loyalty, and long-term commitment. Representing stability and structure, the number 4 reflects qualities that form the foundation of a strong and enduring partnership. Individuals influenced by this number often value honesty, responsibility, and consistency in their romantic lives. Rather than seeking fleeting excitement, they prioritize dependable bonds built on mutual respect. As a result, understanding the significance of this number provides deeper insight into how trust and dedication contribute to meaningful, lasting relationships.



# Key Points for Strong Relationships

## Symbol of Stability:

The *4 Meaning in Love* represents strong foundations, encouraging reliability, structure, and emotional security essential for building lasting and meaningful relationships.

## Trust and Loyalty:

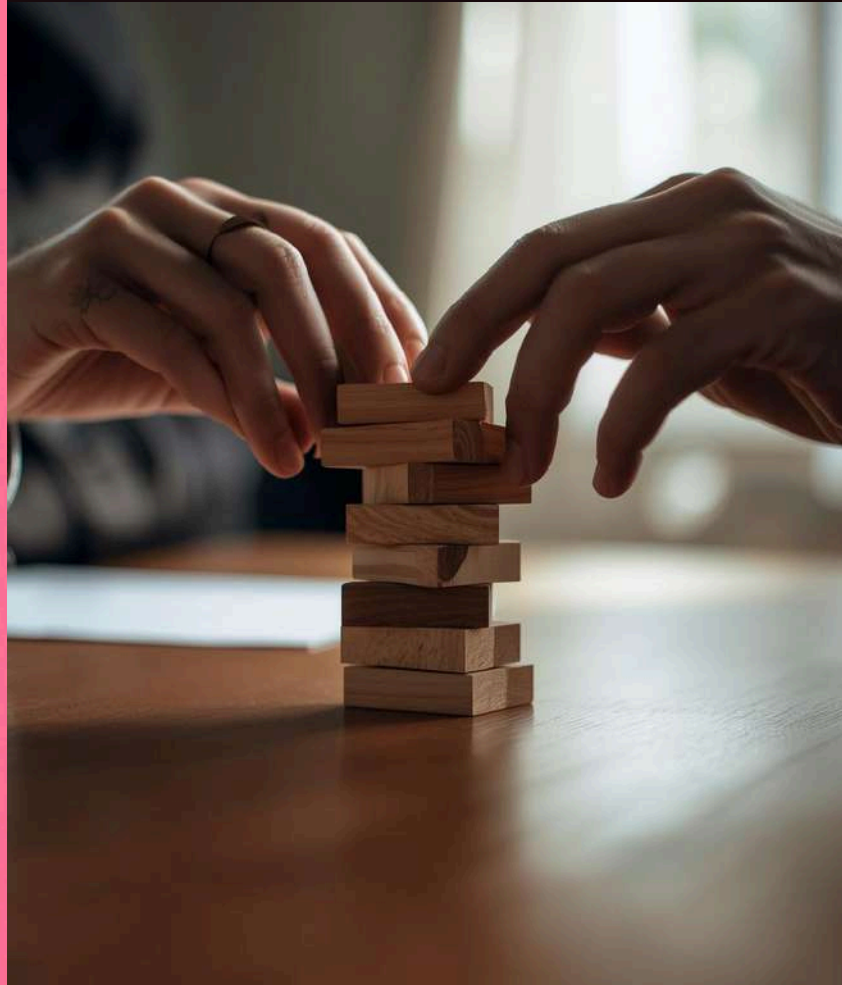
It highlights honesty, dependability, and sincerity, helping partners develop unwavering trust and a deep sense of emotional connection over time together.

## Commitment and Responsibility:

The number signifies dedication, maturity, and accountability, inspiring individuals to nurture relationships through patience, perseverance, and mutual understanding and support.

## Balanced and Practical Love:

It promotes realistic expectations and clear communication, enabling couples to maintain harmony, resolve conflicts effectively, and build secure futures together.



# Significance of 4



The 4 Meaning in Love symbolizes trust, commitment, and emotional stability, making it a powerful representation of enduring relationships. It emphasizes loyalty, responsibility, and strong foundations that support lasting harmony. By embracing these qualities, couples can build meaningful connections rooted in reliability and mutual respect. Understanding its significance offers valuable insight into cultivating balanced partnerships that thrive on trust, patience, and long-term devotion.