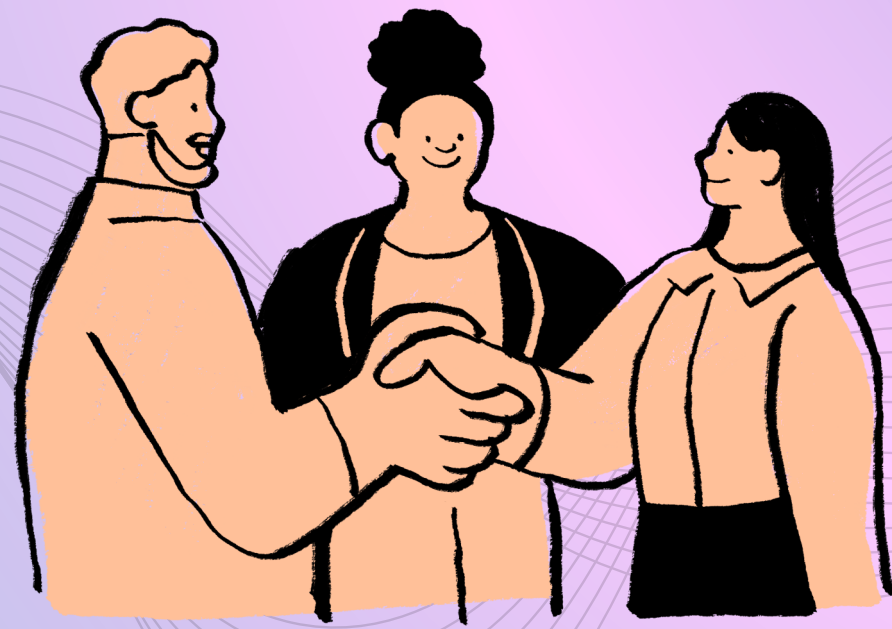


How Leadership Affects Employee Satisfaction in Organizations?





Introduction



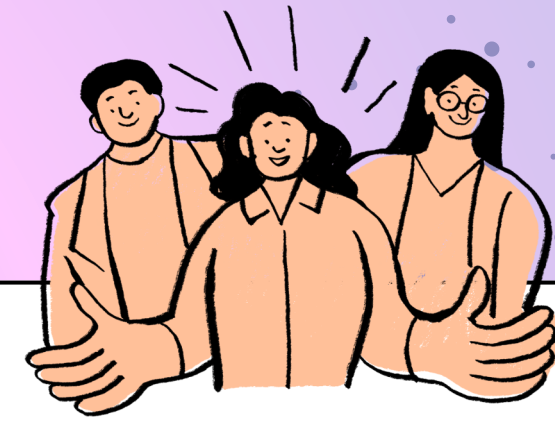
Strong leadership plays a critical role in shaping **Employee Satisfaction** within modern organizations. Effective leaders inspire trust, encourage collaboration, and create a positive work culture. With advanced tools like EmpCloud, organizations can streamline HR processes, enhance communication, and ensure transparency across teams. By aligning leadership strategies with technology, companies can build motivated teams, improve productivity, and foster a workplace where employees feel valued and engaged every day.

Leadership Strategies that Drive Satisfaction

Leadership directly influences **Employee Satisfaction** by enabling structured processes and clear communication. Platforms like EmpCloud support leaders in managing workforce operations efficiently while improving employee experience.



- ➔ • **Transparent Communication**
Leaders can use centralized dashboards to share insights and updates effectively.
- ➔ • **Performance Monitoring**
Real-time analytics help managers track productivity and guide employee growth.
- ➔ • **Recognition & Rewards**
Reward systems boost morale and encourage consistent performance.
- ➔ • **Efficient HR Operations**
Automated attendance, payroll, and leave management reduce administrative stress.
- ➔ • **Employee Empowerment**
Self-service tools allow employees to manage requests and access information easily.



Building a Future-Ready Workplace

To sustain long-term Employee Satisfaction, organizations must adopt innovative leadership supported by smart technology. EmpCloud enables businesses to manage the entire employee lifecycle from recruitment to performance management while improving engagement and efficiency. By leveraging data-driven insights and fostering a supportive culture, leaders can create an environment where employees thrive, collaborate, and contribute meaningfully to organizational growth.

<https://empcloud.com/blog/boost-employee-satisfaction/>

