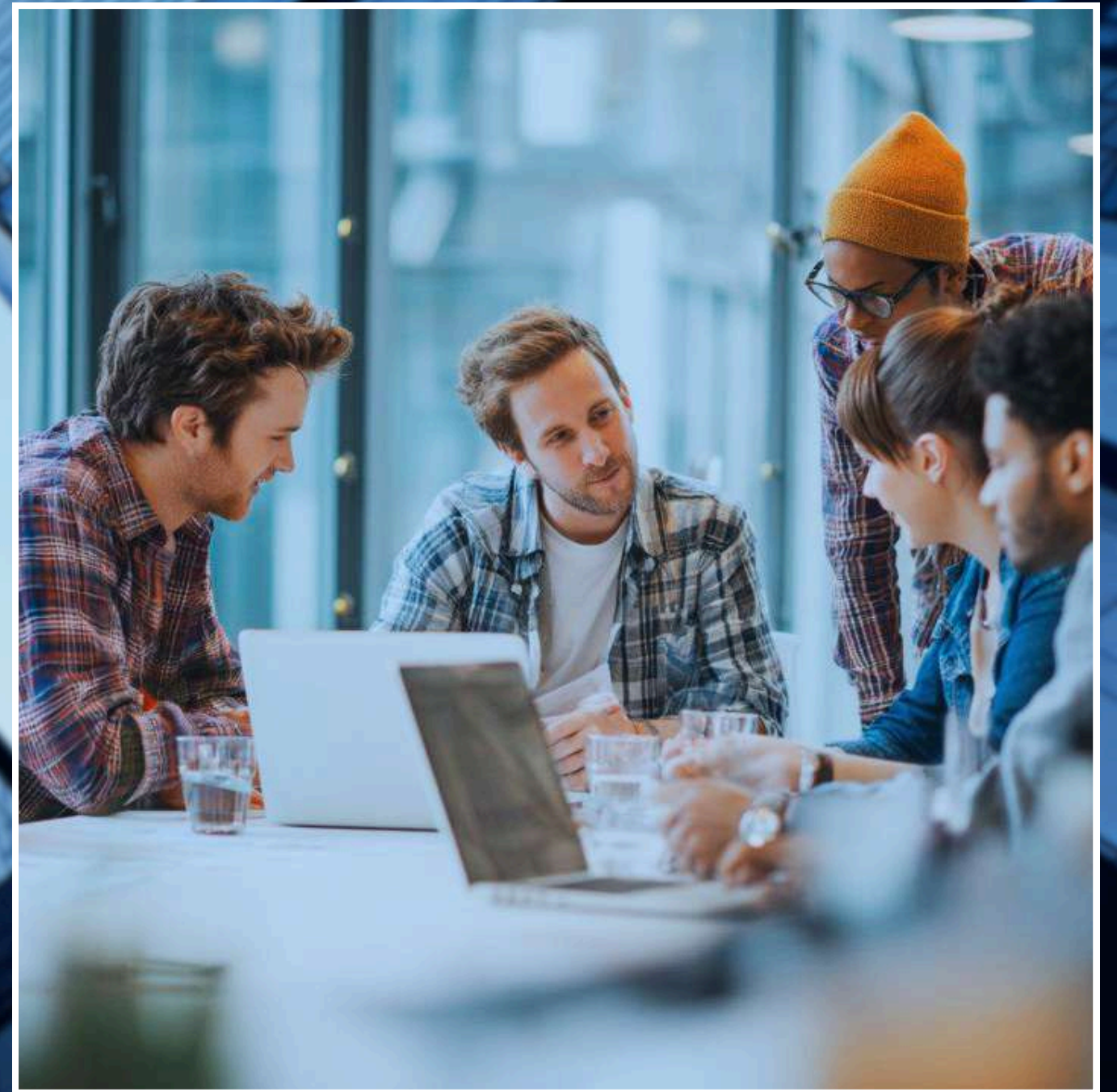


---

# WHY TEAM DEVELOPMENT DETERMINES WORKPLACE SUCCESS?

---





# INTRODUCTION ■■■

**Team development** is essential because organizations rarely succeed through individual effort alone. Strong teams create an environment where communication is clear, responsibilities are understood, and employees support one another in achieving shared goals.

When teams grow together, collaboration improves and workplace challenges become easier to solve. Members understand how their roles connect to the broader objectives of the organization, which reduces confusion and increases productivity. Over time, this alignment builds trust and encourages employees to contribute ideas more confidently.

Ultimately, organizations that invest in team development build stronger collaboration, better problem-solving abilities, and a culture that supports long-term success.



---

# WHAT MAKES TEAMS WORK EFFECTIVELY

Teams function effectively when members understand their roles, communicate openly, and work toward shared objectives. Clear coordination reduces confusion and allows individuals to contribute their skills in a structured way. When trust, collaboration, and accountability are present, teams are able to solve problems faster and achieve stronger results together.



## Clear Communication

Defined roles clarify responsibilities.  
Open discussion encourages idea sharing.  
Regular updates keep everyone aligned.

## Mutual Trust

Respectful interaction builds confidence.  
Accountability strengthens teamwork.  
Culture encourages cooperation.

## Shared Purpose

Clear goals guide the team. Collective effort improves results. Motivation grows through shared direction.



---

# CONCLUSION

Team development transforms individual employees into a coordinated unit capable of achieving meaningful results. When communication is clear, trust is present, and goals are shared, teams become more productive, adaptable, and confident in their decisions. Members begin to rely on one another's strengths, which improves problem-solving and encourages cooperation.

Organizations that consistently focus on collaboration create workplaces where employees support each other, share responsibility, and work together toward long-term success.

<https://empmonitor.com/blog/stages-of-team-development/>

