

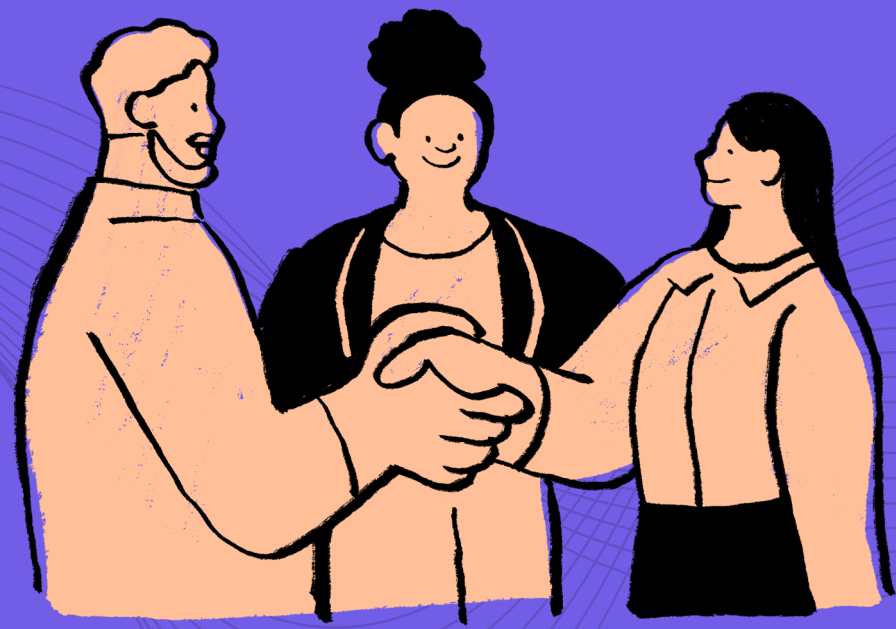
What's PTO

And How Does It Work For Employees?





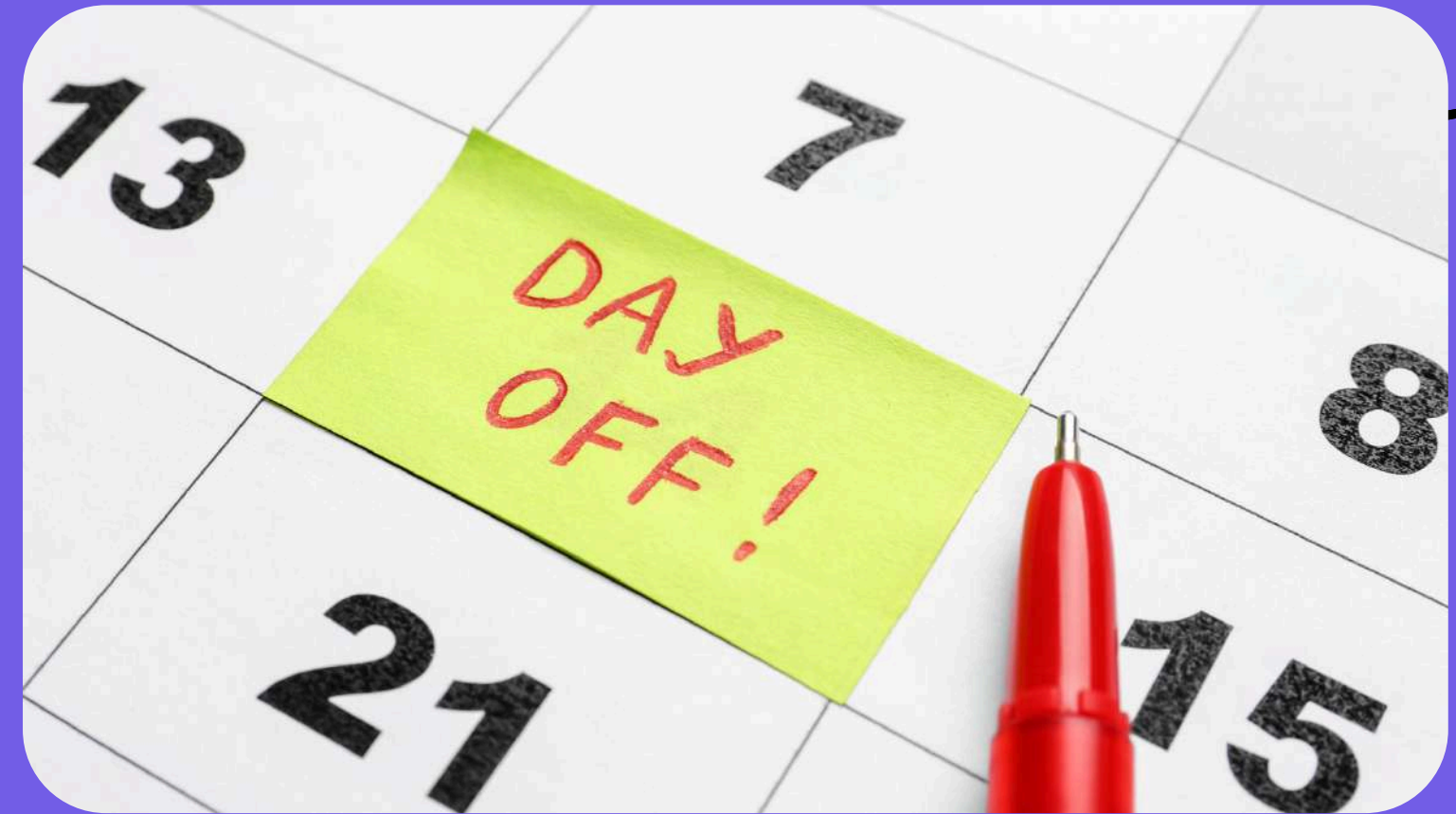
Introduction



What's PTO? PTO stands for Paid Time Off, a valuable employee benefit that allows workers to take paid leave for vacation, illness, personal matters, or emergencies. It gives employees flexibility while helping companies support work-life balance and productivity.

Meaning of PTO

- ✓ PTO stands for Paid Time Off. It combines different types of leave into a single bank of paid days that employees can use when needed.



How PTO Is Earned

- ✓ Many companies offer PTO through an accrual system, where employees earn leave hours or days over time based on their employment terms.

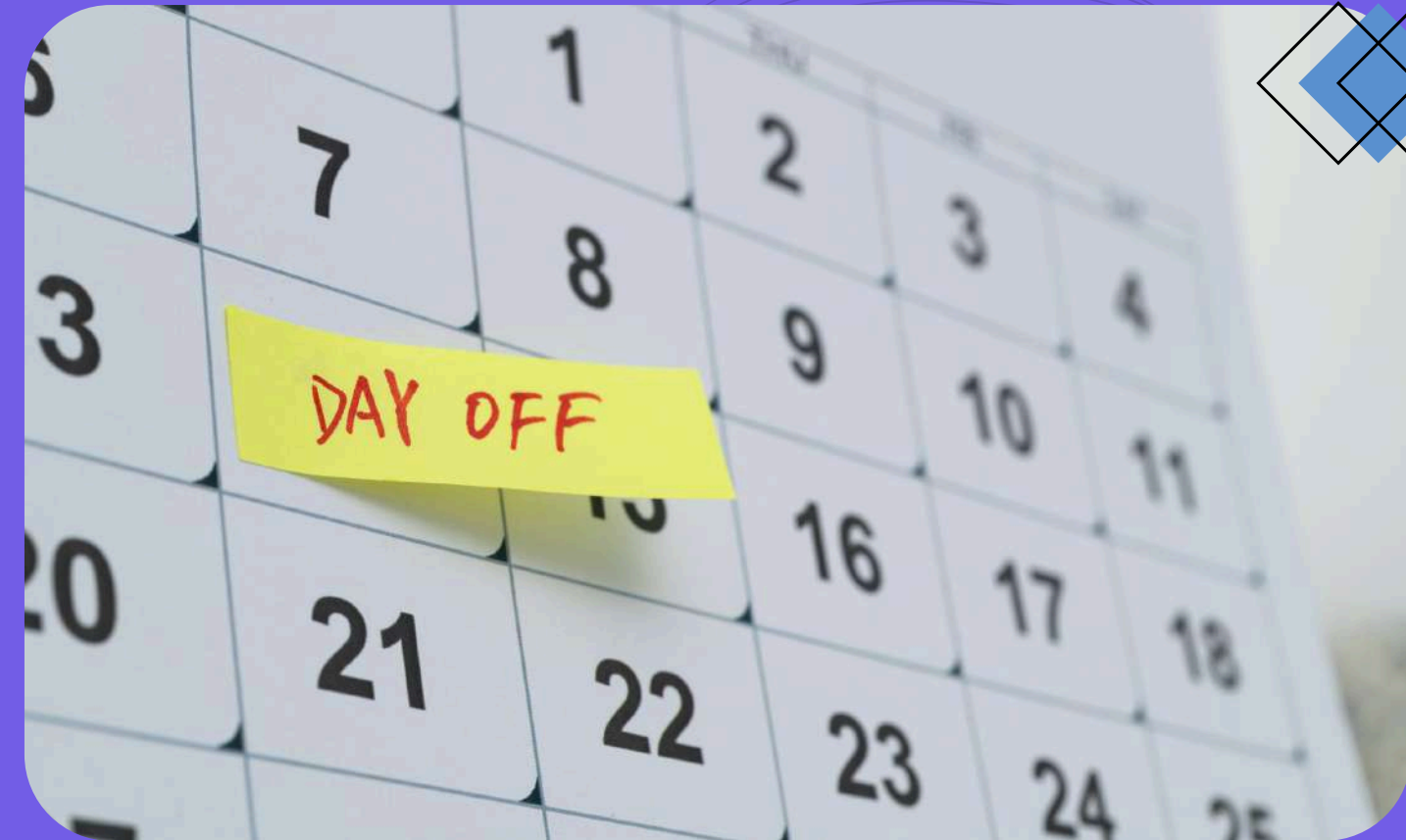




Ways Employees Can Use PTO



- ✓ Employees can use PTO for vacations, sick days, family responsibilities, personal appointments, or rest and recovery.



PTO Request and Approval Process



- ✓ Most organizations require employees to submit PTO requests in advance so managers can approve leave and maintain workflow balance.



Conclusion:

PTO is an important workplace benefit that gives employees flexibility and paid leave when needed. Understanding how PTO works helps employees use their benefits wisely while maintaining a healthy work-life balance.

<https://empmonitor.com/blog/pto-meaning-employee-leave-guide/>

